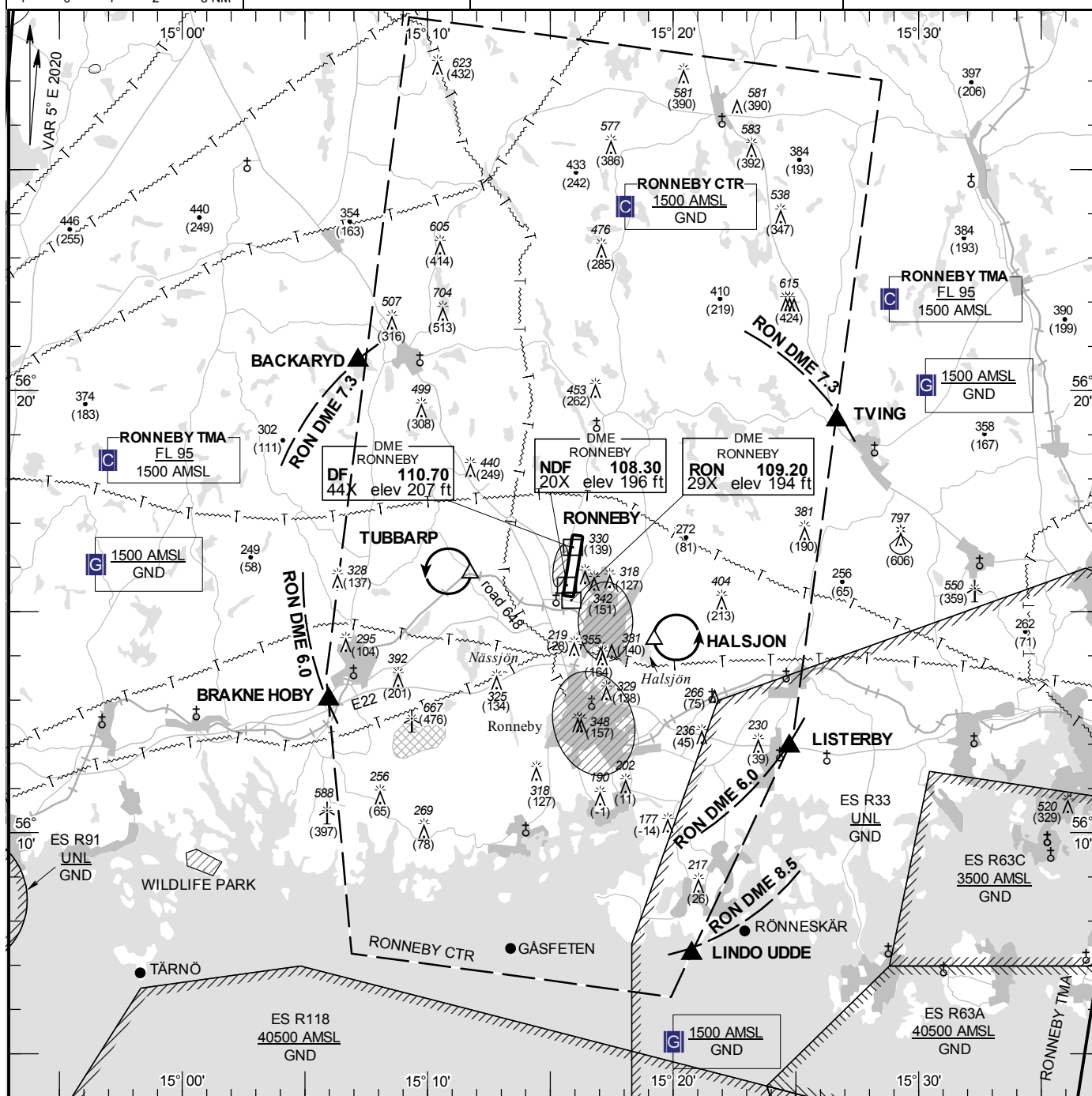


RONNEBY TOWER	119.200
RONNEBY GROUND	121.850
RONNEBY APPROACH	128.450

**RONNEBY  
SWEDEN**



- 1 SQUAWK 7600
- 2 Enter CTR via LISTERBY – Holding  
HALSJON or via BRAKNE HOBY–  
holding TUBBARP at or below  
1000 ft AMSL to traffic circuit.  
Transmit blind your intentions.
- 3 Flash LDG-lights and watch TWR for  
optical signals.

RWY NR	THR ELEV	PAPI (MEHT)
01	181.3 ft	Left/3.00° (59 ft)
19	188.2 ft	Left/3.00° (71 ft)

See GEN 2.3

Noise sensitive areas should be avoided below 1500 ft AMSL.

BACKARYD	562040N 0150710E
TVING	561919N 0152640E
LISTERBY	561156N 0152444E
LINDO UDDE	560715N 0152045E
BRÅKNE HOBY	561300N 0150558E

HALSJON: Hold north of powerline and east of lake Halsjön, east of point 561421N 0151914E

TUBBARP: Hold west of pylon at intersection of road 648 and railway, west of point 561551N 0151143E